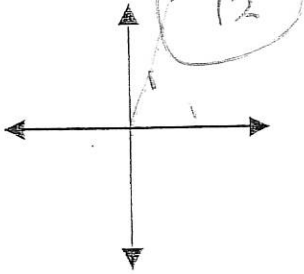
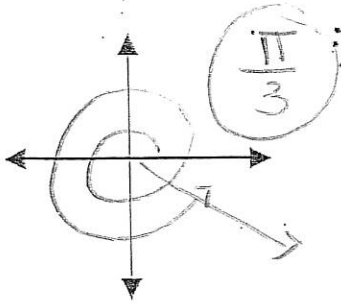


4) Draw the following angles in standard position: State ref \angle .

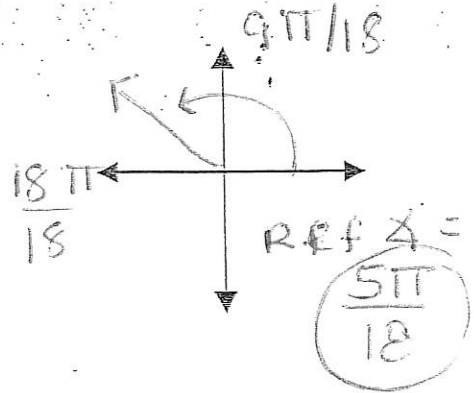
a) $\frac{5\pi}{12}$



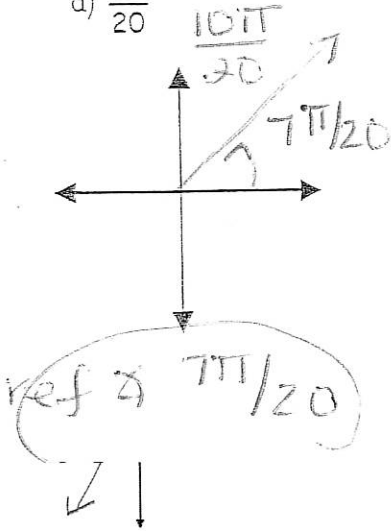
b) $\frac{11\pi}{3} = \frac{6\pi}{3} + \frac{5\pi}{3}$



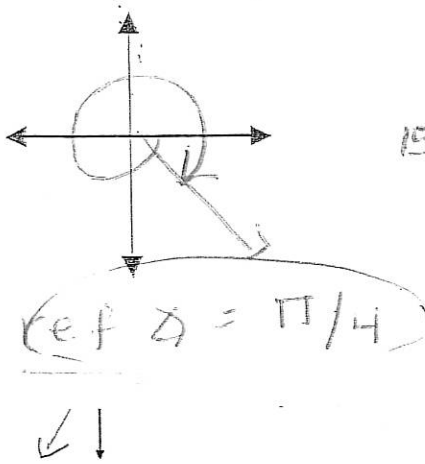
c) $\frac{13\pi}{18}$



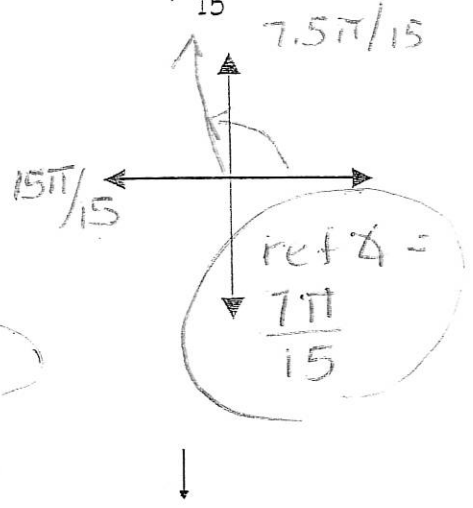
d) $\frac{7\pi}{20}$



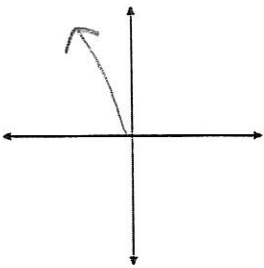
e) $-\frac{9\pi}{4} = -\frac{8\pi}{4} - \frac{\pi}{4}$



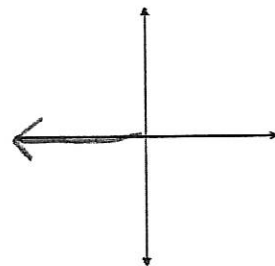
f) $\frac{8\pi}{15}$



d) $\theta = 2$



e) $\theta = -3\pi$



$-\frac{3\pi}{1} = \frac{180}{1^\circ}$