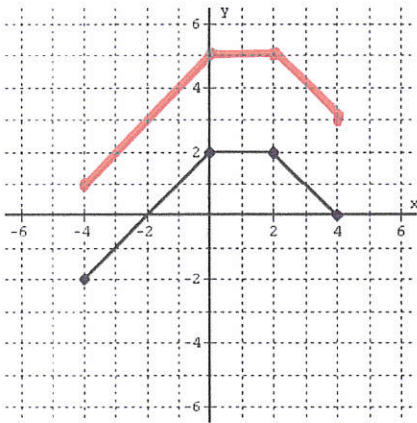
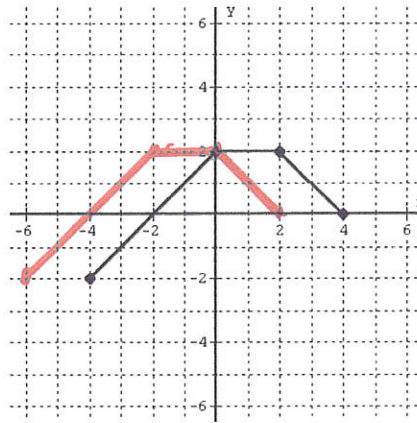


## Graphing Transformations Worksheet 3

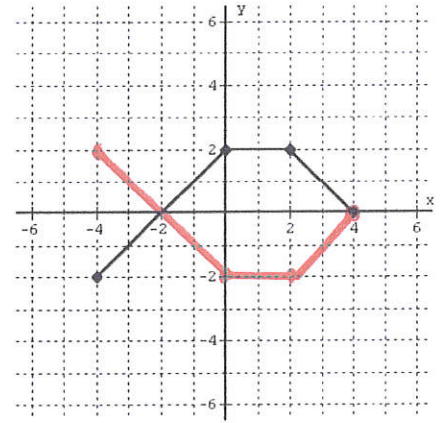
The graph of  $y = f(x)$  is included on each grid below. Use its graph to graph the following functions:



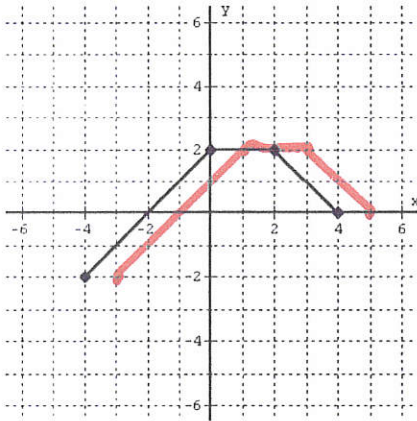
1)  $F(x) = f(x) + 3$



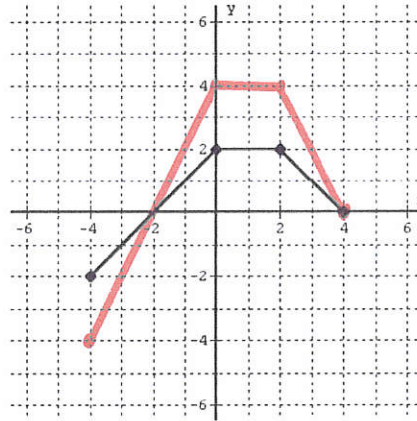
2)  $G(x) = f(x + 2)$



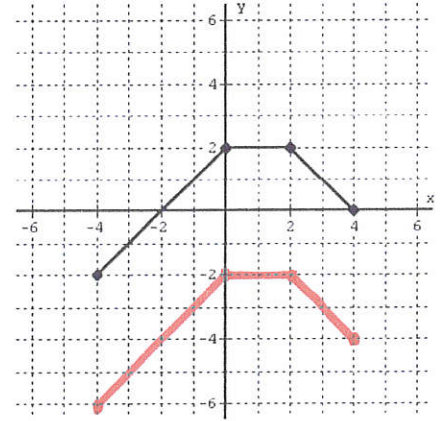
3)  $P(x) = -f(x)$



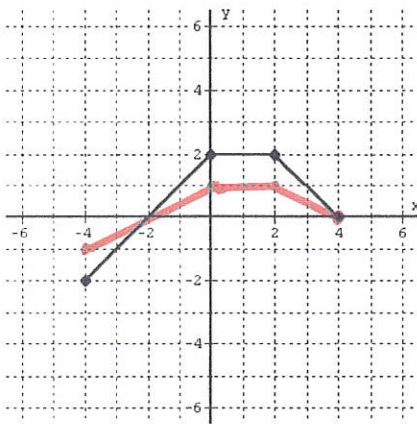
4)  $G(x) = f(x - 1)$



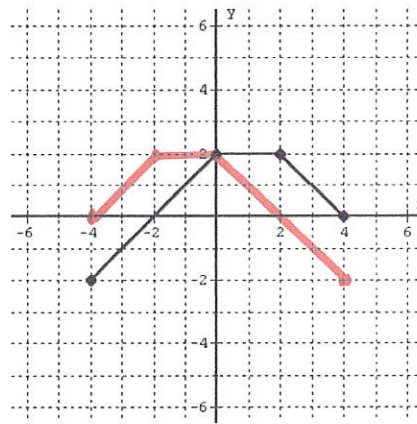
5)  $H(x) = 2f(x)$



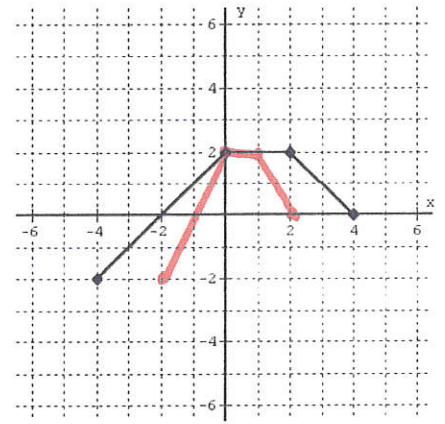
6)  $F(x) = f(x) - 4$



7)  $Q(x) = \frac{1}{2} f(x)$



8)  $g(x) = f(-x)$



9)  $h(x) = f(2x)$